

MONTHLY MEMBERSHIP PROGRESS REPORT

LOCATION ILLINOIS

District 1 F

Results as of: 7/31/2022

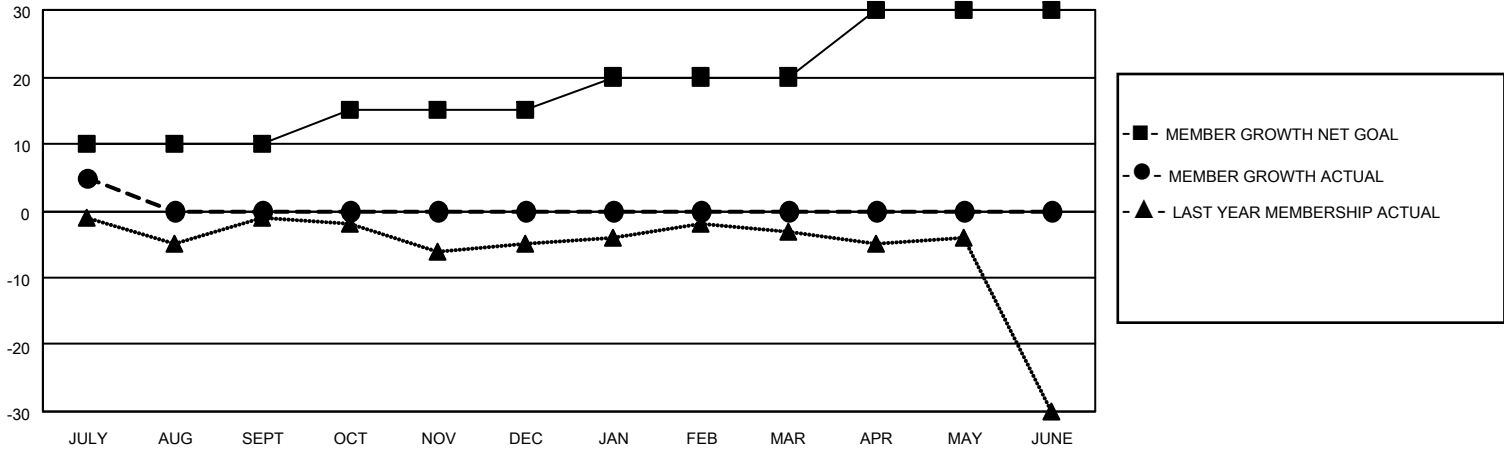
Clubs			
RESULTS FOR 2022-2023			
QUARTER	NEW CLUB GOAL	NEW CLUBS	DROPPED CLUBS
JULY/AUG/SEPT	0	0	0
OCT/NOV/DEC	1	0	0
JAN/FEB/MAR	1	0	0
APR/MAY/JUNE	0	0	0

Members			
RESULTS FOR 2022-2023			
QUARTER	MEMBER GROWTH NET GOAL	MEMBER GROWTH ACTUAL	DROPPED MEMBERS ACTUAL (including transfers)
JULY/AUG/SEPT	10	9	1
OCT/NOV/DEC	5	0	0
JAN/FEB/MAR	5	0	0
APR/MAY/JUNE	10	0	0

GOALS AND ACTUAL NEW CLUBS CUMULATIVE



GOALS AND ACTUAL MEMBERS CUMULATIVE



DROPPED CLUBS: 0

4 CLUBS OF 31 ADDED 1 OR MORE NEW MEMBERS

GENDER DISTRIBUTION

MALE	585 (70.14%)
FEMALE	248 (29.74%)
NON BINARY	0 (0.00%)
PREFER NOT TO ANSWER	1 (0.12%)

DROPPED MEMBERS

[CLICK HERE FOR CUMULATIVE MEMBERSHIP DATA](#)

DECEASED	1
CLUB CANCELLED	0
OTHER	0
TOTAL	1

TOTAL FAMILY UNIT MEMBERS	140
FAMILY MEMBERS PAYING HALF DUES	72